

WESLEYAN

FACILITIES PLANNING UPDATE AND OVERVIEW



STRATEGIC PLANNING

- **KEY GOALS IN "BEYOND 2020":**
 - Financial aid
 - Faculty and academic core
 - **FACILITIES**

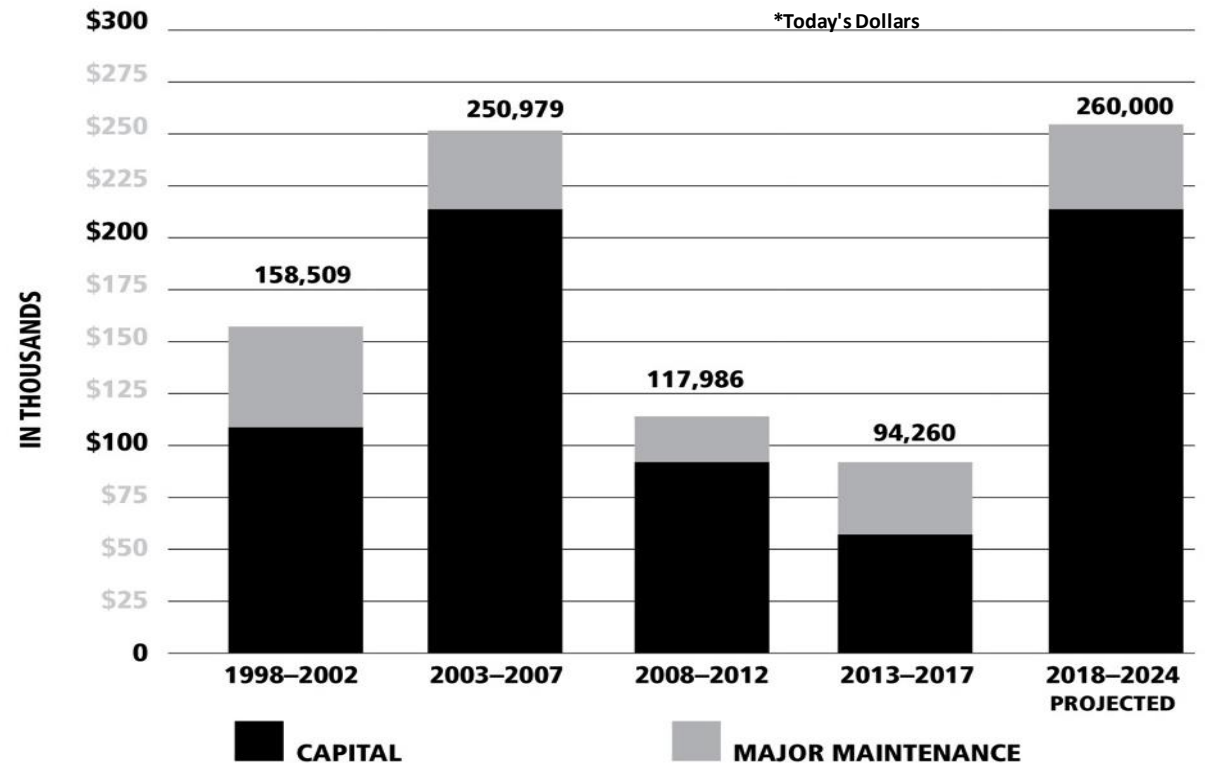
FACILITIES PLANNING

FACILITIES BACKGROUND

From 1998 – 2007, under President Bennet's leadership, the university made significant investments in facilities including Clark Hall, Freeman Athletic Center, Usdan University Center, Memorial Chapel, '92 Theater, Bennet Hall, Fauver Apartments, and Downey House.

Since 2008, the University has shifted investment priorities to building the endowment, but has also devoted resources to Boger Hall, the sciences, housing improvements, Allbritton Center, two Cogeneration plants, Fisk, the Bookstore, the Digital Media Studio, the Shapiro Writing Center, Citrin Field, the Cross Street Dance Studio, Malcolm X House, etc. The university also worked with Sasaki Associates to develop a framework for campus planning.

PHYSICAL PLANT SPENDING COMPARISON



WHAT WE'VE BEEN DOING



GORDON CAREER CENTER



BOOKSTORE



ATHLETICS



SHAPIRO WRITING CENTER



EXLEY LOBBY



MAKERSPACE



OUTDOOR SPACES



SCIENCE LABS



FISK HALL - CGS

FACILITIES PLANNING PROCESS AND OUTCOMES

THE PLANNING PROCESS (2016-2017)

- Seek proposals & review critical needs
- List of “10”
- Discussions with key constituents
- Working list of priorities

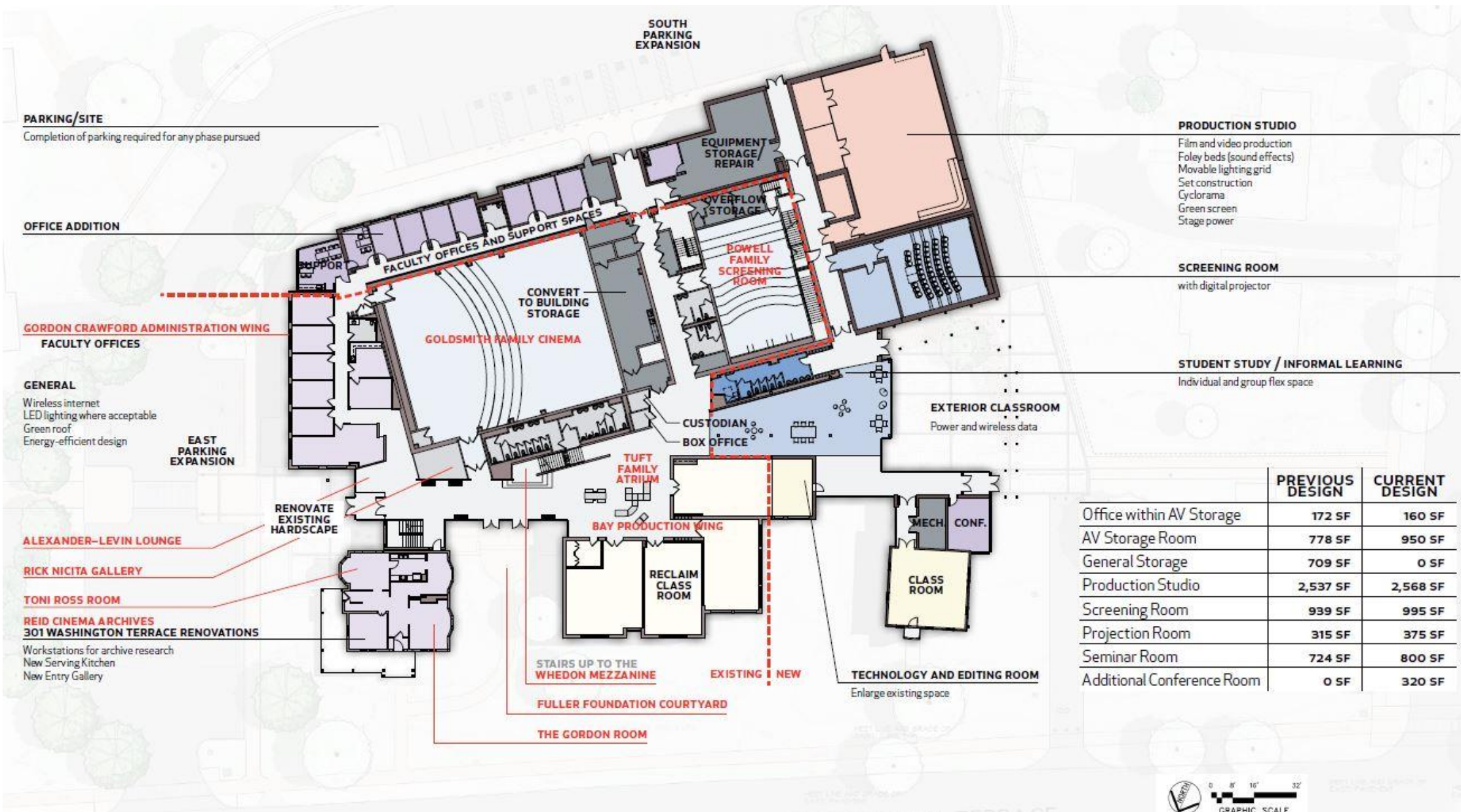
OUTCOMES (2018 & BEYOND)

- Arts
- PAC
- Science

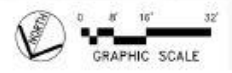
ARTS: FILM PHASE III & OLIN-DAC-ZILKHA

FILM PHASE III

- **The current Film Studies building encompasses 28,000 sq ft (the most recent stages were completed in 2004 & 2007)**
- **Phase III calls for an additional 16,000 sq ft addition that will include a state of the art production studio, a 50 seat theater classroom, expansion of storage facilities and additional faculty and student spaces.**
- **The effort will cement (literally) Jeanine Basinger's legacy and continue to leverage C-Film's success and national recognition (top ten in national film programs; #9 in Hollywood Reporter)**
- **The project will provide a state-of-the art home to a high-demand major and to a flagship program that has recently added a minor and has vastly expanded its ability to support student filmmaking.**
- **Expected project cost is \$15 million; more than \$4 million has been raised to date.**

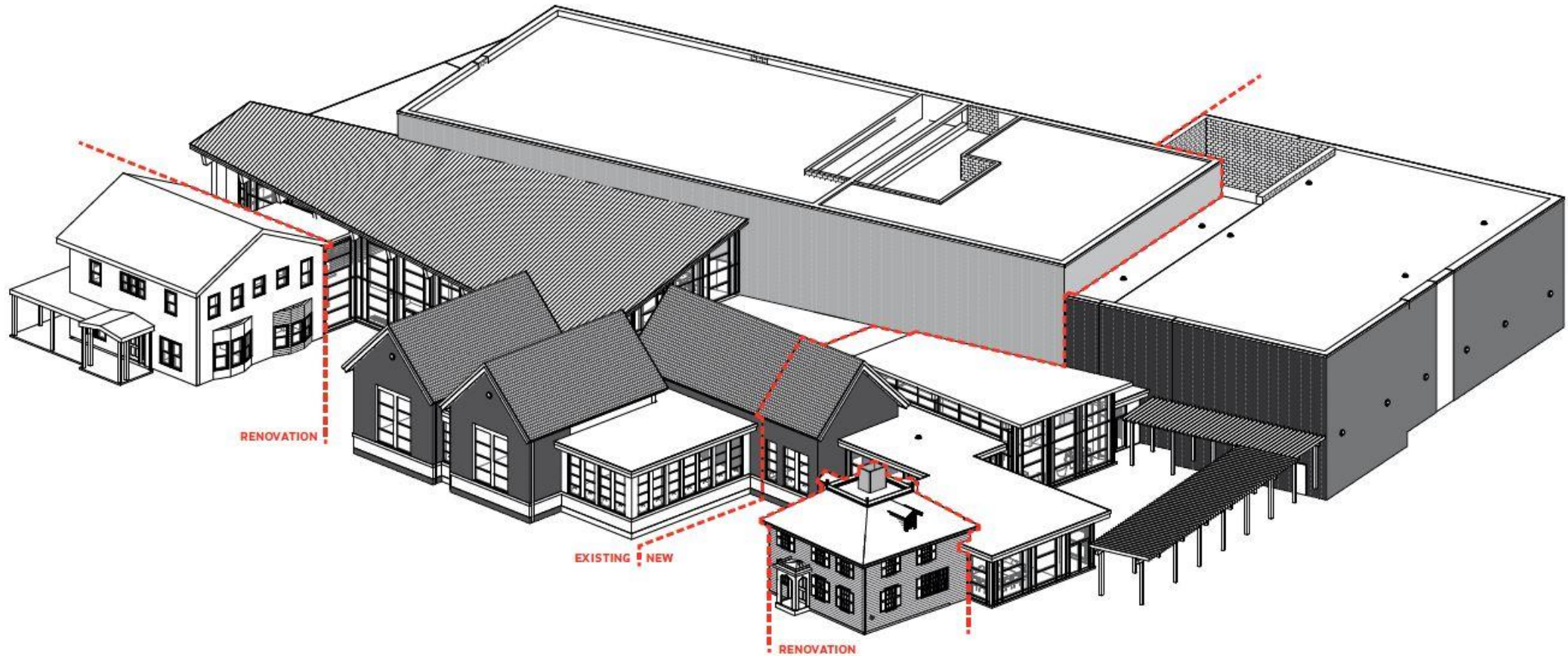


	PREVIOUS DESIGN	CURRENT DESIGN
Office within AV Storage	172 SF	160 SF
AV Storage Room	778 SF	950 SF
General Storage	709 SF	0 SF
Production Studio	2,537 SF	2,568 SF
Screening Room	939 SF	995 SF
Projection Room	315 SF	375 SF
Seminar Room	724 SF	800 SF
Additional Conference Room	0 SF	320 SF



WESLEYAN UNIVERSITY CENTER FOR FILM STUDIES - PHASE III
301 WASHINGTON TERRACE, MIDDLETOWN, CT

3D VIEW: NEW/EXISTING



PROPOSED ELEVATIONS



NORTH ELEVATION



WESLEYAN UNIVERSITY CENTER FOR FILM STUDIES - PHASE III
301 WASHINGTON TERRACE, MIDDLETOWN, CT

JCJ ARCHITECTURE
H17041.00 / 2018-0117 / © JCJ ARCHITECTURE

ARTS COLLECTION MOVE TO OLIN LIBRARY

- **Wesleyan's print collection is one of the finest at an American university. The collection includes works by Dürer and Northern and Italian Renaissance artists; Rembrandt and his contemporaries; Goya; nineteenth-century French painter-printmakers such as Manet and Millet; and American modern and contemporary artists, especially Jim Dine.**
- **Currently classes can visit the collection, but no more than 12 students at a time can enter the study space; the new study space would support classes of up to 30 people and have a contiguous art preparation space. Moving the collection to Olin makes the materials more accessible and allows for climate-controlled storage space, including room to grow the collection (currently over 26,000 items).**
- **The new space will also have secure, climate-controlled vitrines so that all students can get more exposure to these artworks and can curate their own mini-exhibitions. The renovation will also allow for student training in preparation of art for exhibit. We are considering adding additional exhibition space in Olin subsequently, but only after doing a more complete assessment of Olin and SciLi's storage and other space requirements.**

CURRENT STATUS – DAC ART COLLECTION



BASEMENT FLAT FILE STORAGE

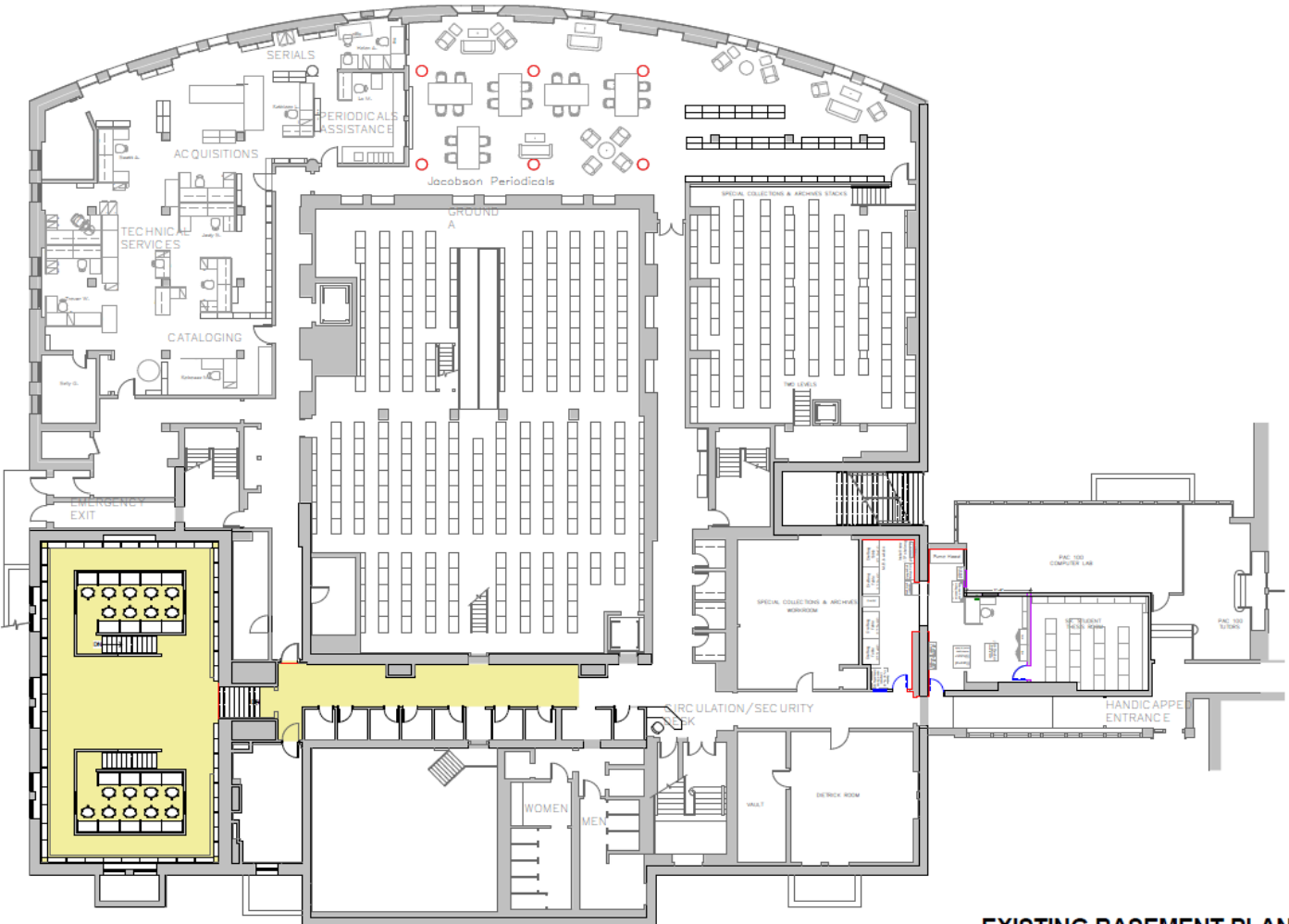


PRINT VAULT



RECEIVING AREA

CURRENT STATUS – MICROFORMS ROOM AT OLIN LIBRARY



EXISTING BASEMENT PLAN



EXISTING MICROFORMS ROOM

EXAMPLES OF CLASSROOMS, ART PREPARATION AND DISPLAY SPACES



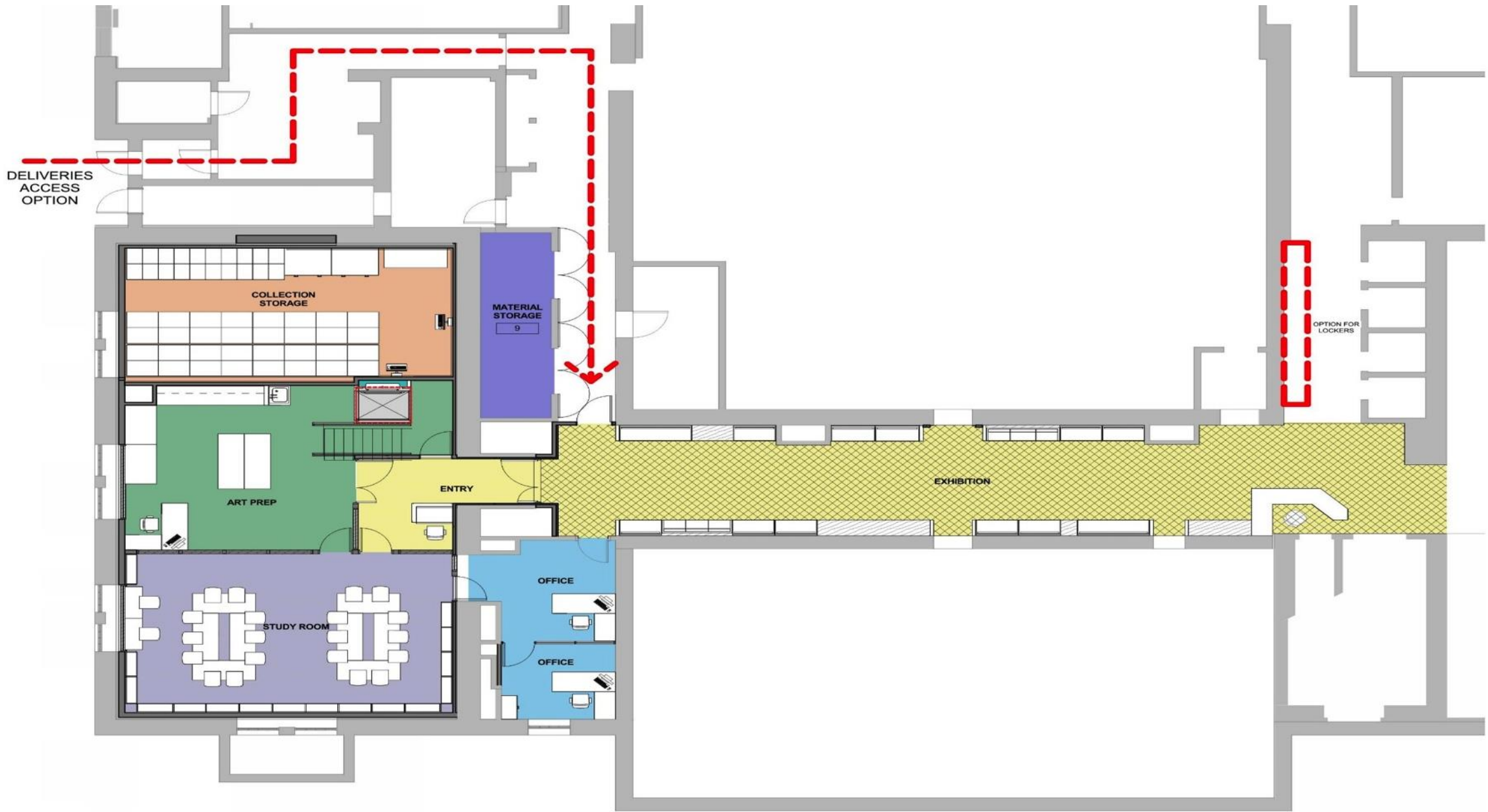
PRINT/DRAWING/PHOTO STUDY ROOM, YUAG



VITRINE GALLERY, YUAG

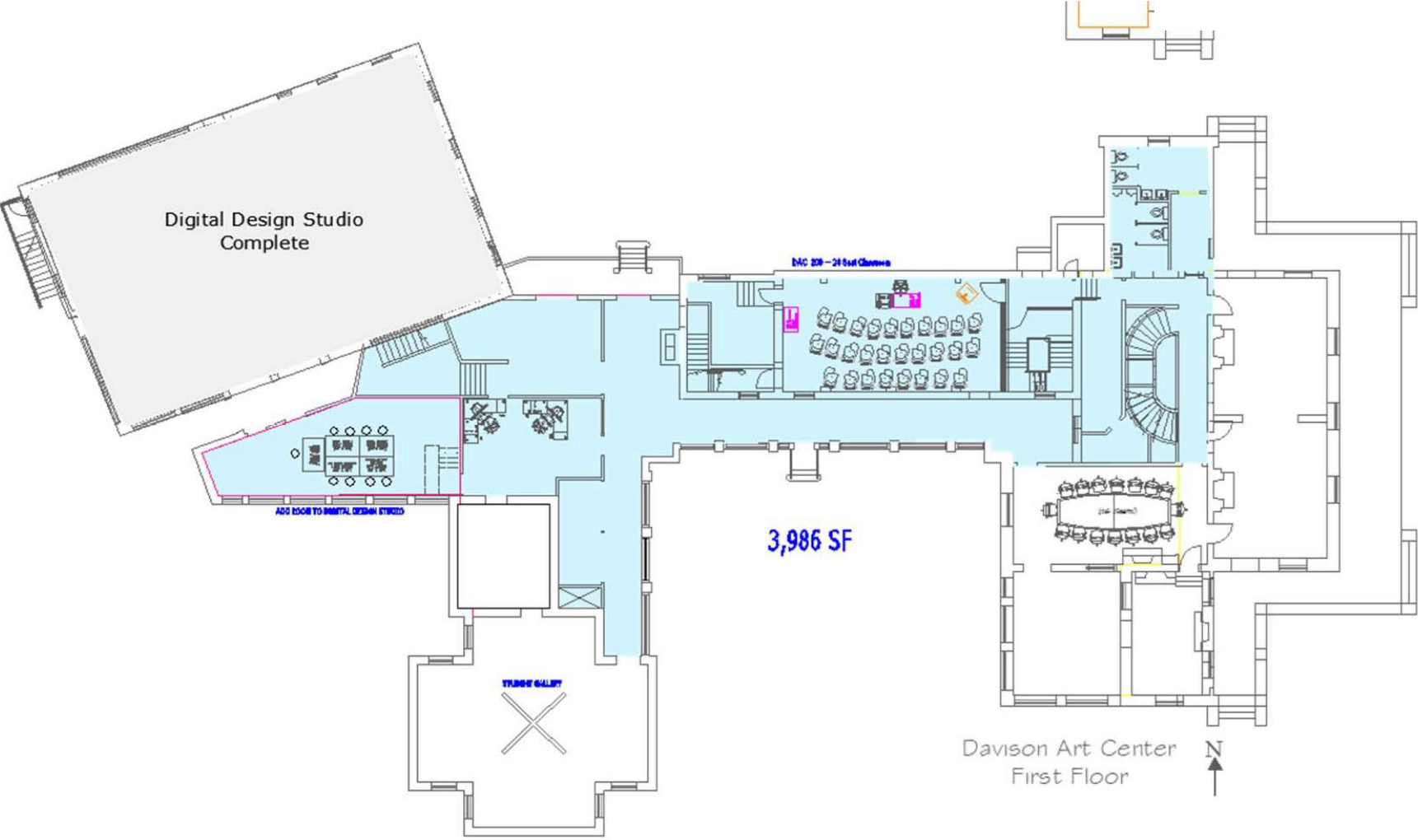


CURATORIAL LAB, MOMA



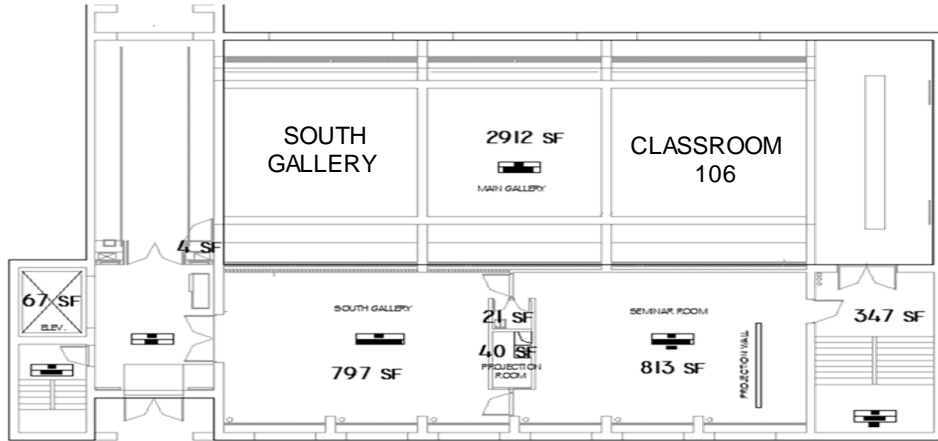
3 • Proposed Plan

DAC conversion to Digital Design Commons

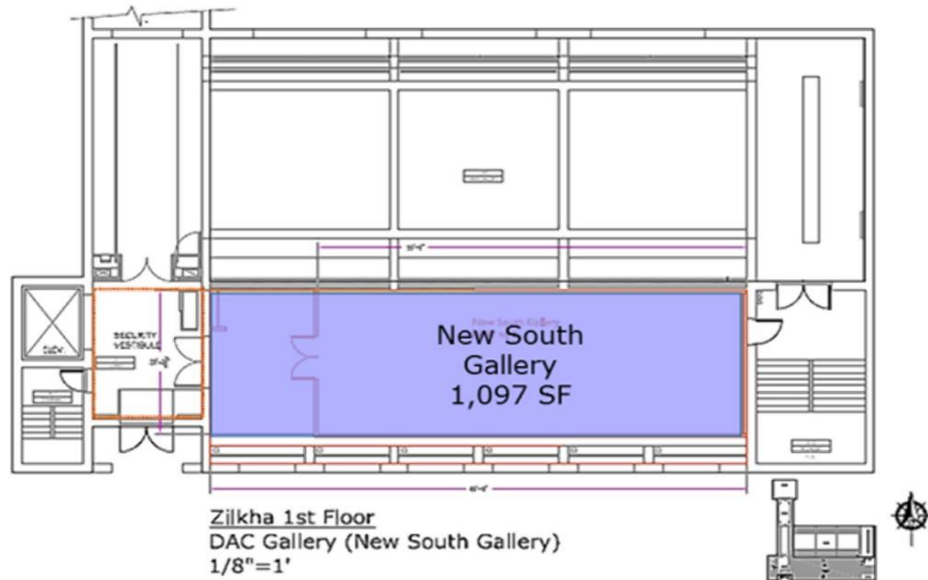


2018 Strategic Campus Planning: Zilkha South Gallery

Existing Conditions



Proposed Renovation



Scope Description and Cost

- 1st Floor: Create a larger, 'conditioned' South Gallery (eliminates classroom 106)
- Refresh entrances and circulation areas of 1st floor of Zilkha Gallery
- Address electrical infrastructure upgrades as needed

PAC

PAC

- Originally built in 1928, and last renovated in 1954, the PAC is at the center of campus and home to Economics, Government, History, Sociology, and the College of Social Studies. At the groundbreaking ceremony for the PAC, President Butterfield cited its program as one of the nation's "most successful enterprises" in breaking down "the rigidity of departmentalization." The building has not been organized by departmental blocks.
- The PAC includes 77 offices for faculty and staff and 13 teaching spaces encompassing 48,000 sq ft. By graduation, almost every student will have taken a class or met with a faculty member in the PAC. It is a hub of campus academic life. Although heavily used, after Fisk Hall (which has been subsequently renovated), in Sasaki's survey, PAC was the building students liked least
- The building structure, especially the 1950s addition, requires annual maintenance and houses mechanical systems that are beyond their useful life. Approximately \$40 million will transform the PAC.

PAC – EXISTING EAST ELEVATION



PAC – PROPOSED RENOVATION



VIEW FROM EAST / JUDD HALL



VIEW FROM ALLBRITTON / SOUTH



VIEW FROM USDAN / NORTH

PAC – PROPOSED INTERIOR VS CURRENT



FLEXIBILITY



INFORMAL LEARNING



TRANSPARENCY



COLLABORATIVE

SCIENCE

SCIENCE

- **Hall Atwater built in 1965 (116,000 gross square feet); Shanklin built in 1928 (28,000 gross square feet). Proposed Molecular Life Science Building project was shelved in 2008.**
- **We have gone from 200 science majors per class in the early 2000s to close to 400 today; big growth areas include Neuroscience, Biology, Psychology**
- **Lab work is the ultimate in project-based learning; hands-on, intensely collaborative small group work**
- **Wesleyan is a leader in science among our peers. Science is a point of differentiation for Wesleyan compared to our LAC peers.**
- **The infrastructure of Hall Atwater cannot support the expansion needed in the sciences.**
- **Project cost of \$100M+ will require aggressive fundraising and a new debt issue.**

SCIENCE – CURRENT STATUS

Hall Atwater 135 - 138 –Personick Chemistry Lab



BEFORE



AFTER

SCIENCE — CURRENT AND PROPOSED



PROJECTED FACILITIES CAPITAL EXPENDITURES (2017–2024)

TOTAL = \$212M

